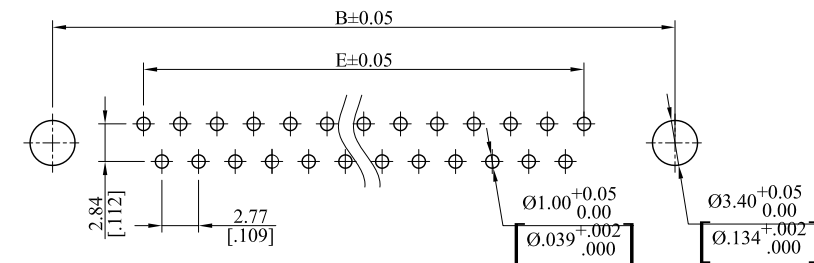
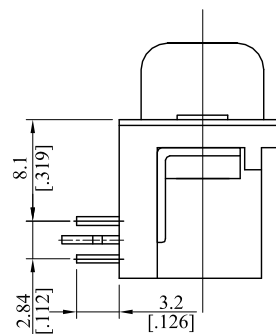
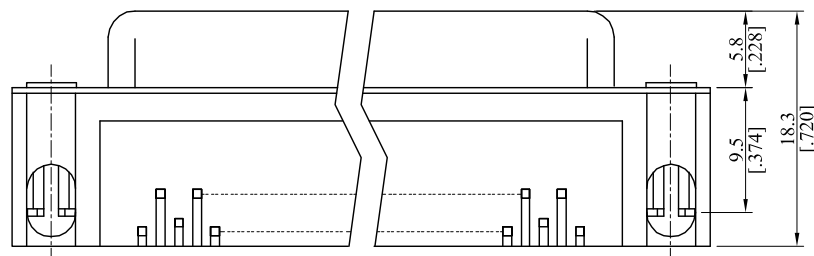
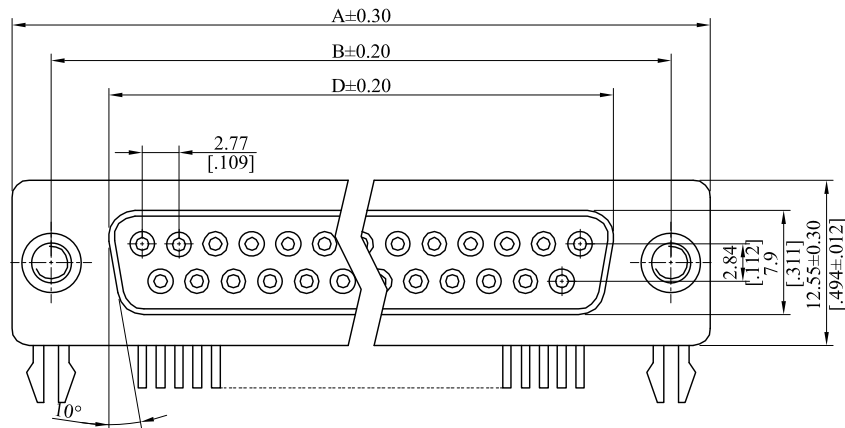


RoHS COMPLIANT

CUSTOMER DRAWING

REV.	ECO. NO.	DESCRIPTION	DATE
C	ES071210	UPDATE	
D	ES171122	UPDATE	2017.11.27



Recommended P.C.B Layout

Note:

Material:

- Insulator: Thermoplastic, UL94 V-0, Black
- Contact: Copper Alloy
- Shell: Steel, Ni Plated
- Clinch Nut: Copper Alloy, Ni Plated
- Boardlock: Steel, Tin Plated

General part number:

D *-* SL * RL2
1 2

1.No. of circuits

- DE-09=9Pin
- DA-15=15Pin
- DB-25=25Pin
- DC-37=37Pin

2.Plating:

- U=Gold flash over 30µ" min. Nickel underplating overall
- F=Selective Gold flash on contact area over 30µ" min. Nickel underplating overall, Tin plated on solder tails
- J=15µ" min. Selective Gold flash on contact area over 30µ" min. Nickel underplating overall, Tin plated on solder tails
- K=30µ" min. Selective Gold flash on contact area over 30µ" min. Nickel underplating overall, Tin plated on solder tails

37	69.40(2.732)	63.50(2.500)	54.80(2.157)	49.86(1.963)
25	53.05(2.089)	47.04(1.852)	38.40(1.512)	33.24(1.309)
15	39.20(1.542)	33.30(1.311)	24.70(.972)	19.39(.763)
9	30.81(1.213)	24.99(.984)	16.33(.643)	11.08(.436)
No. of circuits	Dim.A	Dim.B	Dim.D	Dim.E

TOLERANCE UNLESS OTHERWISE SPECIFIED

mm	mm	inch
[inch]		
1 PLACE	± 0.30	± ---
2 PLACES	± 0.20	± .012
3 PLACES	± 0.10	± .008
4 PLACES	± ---	± .004

ANGULAR ±1°



LECO CORPORATION

<http://www.leoco.com.tw>

APPROVED BY: Chard DATE: 2017.11.27

CHECKED BY: Angel DATE: 2017.11.27

DRAWN BY: Shirley DATE: 2017.11.27

SIZE: A3 SCALE: 1:1

TITLE: R/A Female D-SUB

PART NO.: D*-*SL*RL2

DRAWING NO.: DSL004S REV.: D SHEET: 1 OF 1