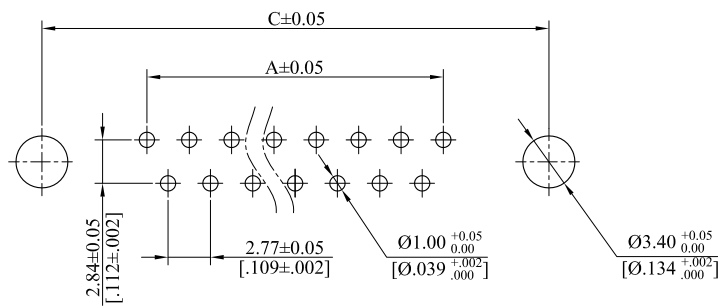
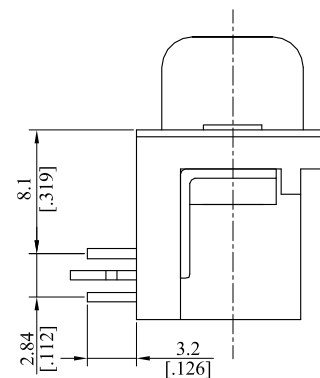
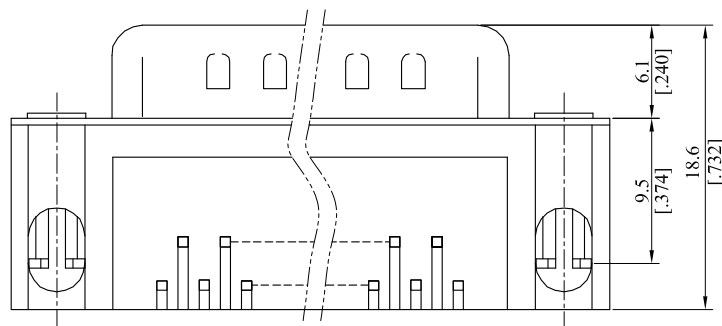
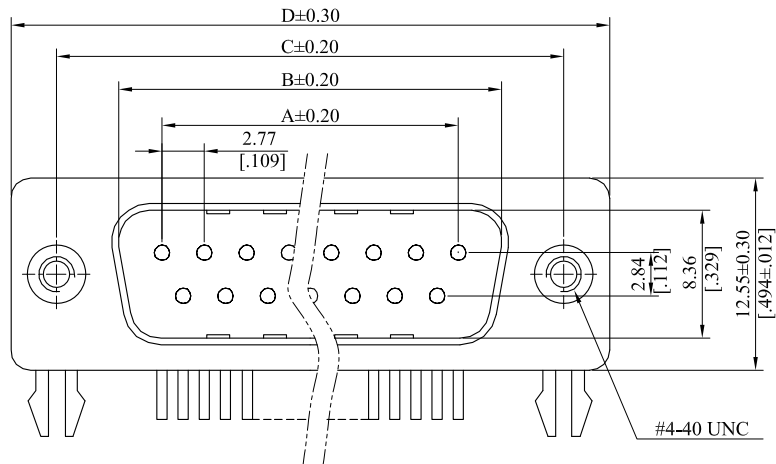


RoHS COMPLIANT

CUSTOMER DRAWING

REV.	ECO. NO.	DESCRIPTION	DATE
A	DWG. REL.	APPROVED	2018.08.14



Recommended P.C.B Layout

Note:

Material:  
 Insulator: Thermoplastic, UL94 V-0, Black  
 Contact: Copper Alloy  
 Shell: Steel, Ni Plated  
 Clinch Nut: Copper Alloy, Ni Plated  
 Boardlock: Steel, Tin Plated

General part number:

D \*\_\*\* PL \* RL2  
 1 2

- 1.No. of circuits
- DE-09=9Pin
- DA-15=15Pin
- DB-25=25Pin
- DC-37=37Pin

2.Plating:

- F=Selective Gold flash on contact area over 30µ" min.
- Nickel underplating overall, Tin plated on solder tails
- J=15µ" min. Selective Gold flash on contact area over 30µ" min.
- Nickel underplating overall, Tin plated on solder tails
- K=30µ" min. Selective Gold flash on contact area over 30µ" min.
- Nickel underplating overall, Tin plated on solder tails

37	69.40(2.732)	63.50(2.500)	55.42(2.182)	49.86(1.963)
25	53.05(2.089)	47.04(1.852)	38.96(1.534)	33.24(1.309)
15	39.20(1.542)	33.30(1.311)	25.25(.994)	19.39(.763)
9	30.81(1.213)	24.99(.984)	16.92(.666)	11.08(.436)
No. of circuits	Dim.D	Dim.C	Dim.B	Dim.A

TOLERANCE UNLESS OTHERWISE SPECIFIED			<b>LEOCO CORPORATION</b> <a href="http://www.leoco.com.tw">http://www.leoco.com.tw</a>		
mm	mm	inch	APPROVED BY:	DATE:	TITLE:
[inch]			Chard	2018.08.14	R/A Female D-SUB
1 PLACE	± 0.30	± --	CHECKED BY:	DATE:	
2 PLACES	± 0.20	± .012	Angel	2018.08.14	PART NO.: D*_**PL*RL2
3 PLACES	± 0.10	± .008	DRAWN BY:	DATE:	
4 PLACES	± --	± .004	Shirley	2018.08.14	DRAWING NO.: DPL050S
ANGULAR ±1°			SIZE:	SCALE:	
			A3	1:1	A
					SHEET: 1 OF 1