

3951P ** H00 *

1 2

- 1. No. of circuits.
- 2. Color options.

1=black 7=blue
3=red 0=white

*** 3951 H Series ***

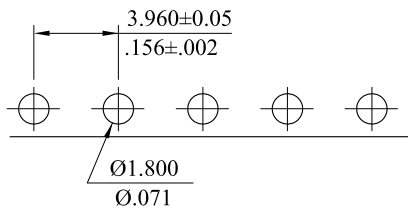
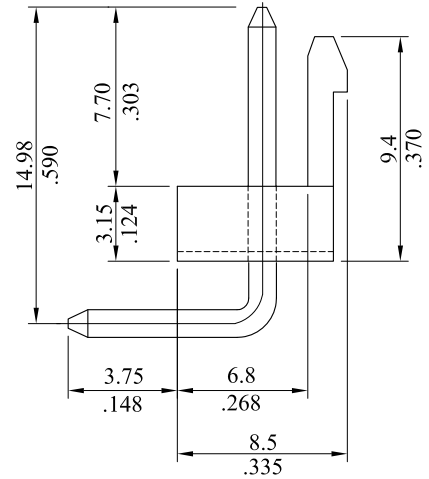
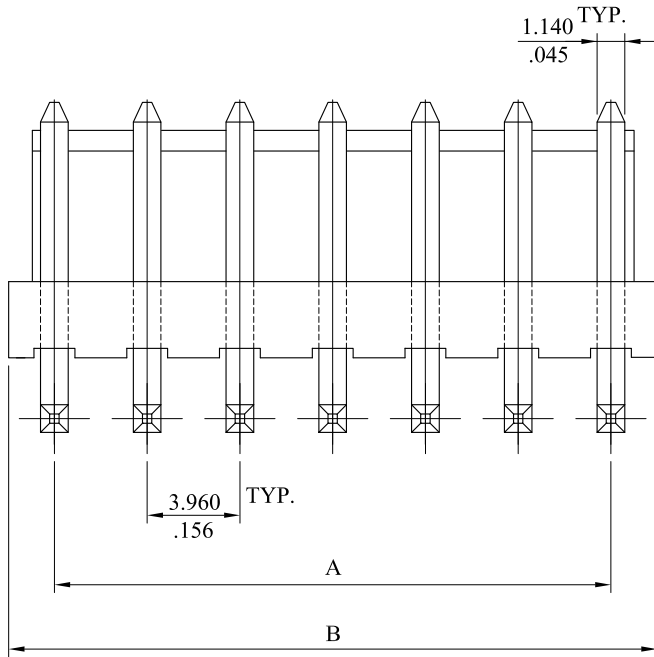
Material :

* Insulator : Nylon 6/6,UL 94V-0

* Contact : Brass

* Plating : Tin plated 120μ " min over 30μ " min. nickel overall

RoHS COMPLIANT



Recommended Hole Pattern

3951P16H00*	59.40±0.30(2.339±.012)	63.36±0.30(2.505±.012)
3951P15H00*	55.44±0.30(2.196±.012)	59.40±0.30(2.339±.012)
3951P14H00*	51.48±0.30(2.027±.012)	55.44±0.30(2.196±.012)
3951P13H00*	47.52±0.30(1.871±.012)	51.48±0.30(2.027±.012)
3951P12H00*	43.56±0.30(1.715±.012)	47.52±0.30(1.871±.012)
3951P11H00*	39.60±0.30(1.559±.012)	43.56±0.30(1.715±.012)
3951P10H00*	35.64±0.30(1.403±.012)	39.60±0.30(1.559±.012)
3951P09H00*	31.68±0.30(1.247±.012)	35.64±0.30(1.403±.012)
3951P08H00*	27.72(1.091)	31.68±0.30(1.247±.012)
3951P07H00*	23.76(.935)	27.72±0.30(1.091±.012)
3951P06H00*	19.80(.780)	23.76±0.30(.935±.012)
3951P05H00*	15.84(.624)	19.80(.780)
3951P04H00*	11.88(.468)	15.84(.624)
3951P03H00*	7.92(.312)	11.88(.468)
3951P02H00*	3.96(.156)	7.92(.312)
Part No.	DIM. A	DIM. B

F	ES101227			LEOCO CORPORATION	APPROVED:	PART NO.:						
E	ES050351				GENERAL TOLERANCES: (UNLESS SPECIFIED)	DATE:	3951P**H00*					
D	ES050324			mm		inch	CHECKED:	TITLE:				
C	ES040919			1 PLACE	± 0.30	± --	DATE:	HEADER				
A	DWG REL			2 PLACES	± 0.20	± .012	DRAWN:	DRAWING NO.:				
REV.	ECO. NO.	CHG.	APP.	3 PLACES	± 0.10	± .008	DATE:	395104S				
				4 PLACES	± --	± .004		UNITS	SCALE	SIZE	SHEET	REV.
				ANGULAR	± (1°)			mm / inch	3:1	A4	1/1	F