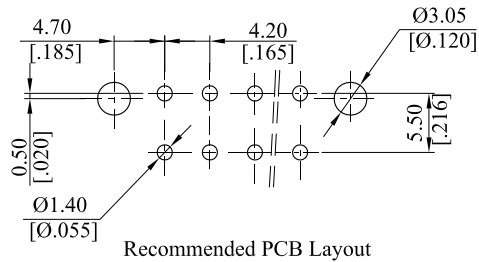
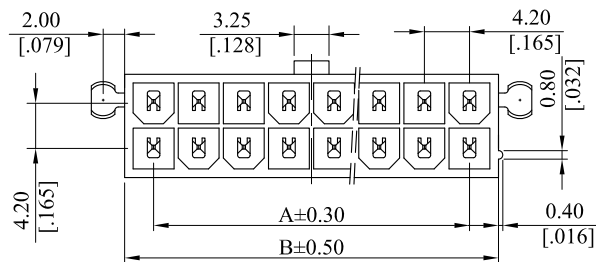


RoHS COMPLIANT

CUSTOMER DRAWING

REV.	ECO. NO.	DESCRIPTION
A	DWG. REL.	APPROVED



Note:

Material:

Insulator: Thermoplastic

Contact: Brass

General part number:

6745P ** V * 0 *
1 2 3

1. No. of circuits(2~24)

2. Plating:

0= Tin plated 120µ" min. over 30µ" min. Nickel underplating overall.

U= Gold flash over 30µ" min. Nickel underplating overall.

W= 15µ" min. Gold over 30µ" min. Nickel underplating overall

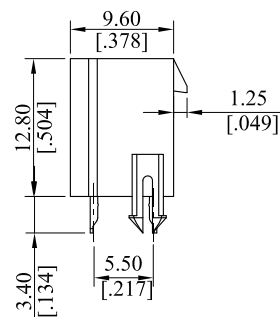
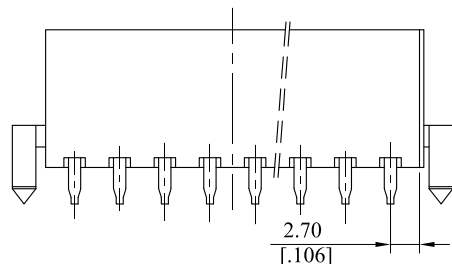
3. Options:

E= UL 94V-2 without screw hole and with mounting pegs, Natural

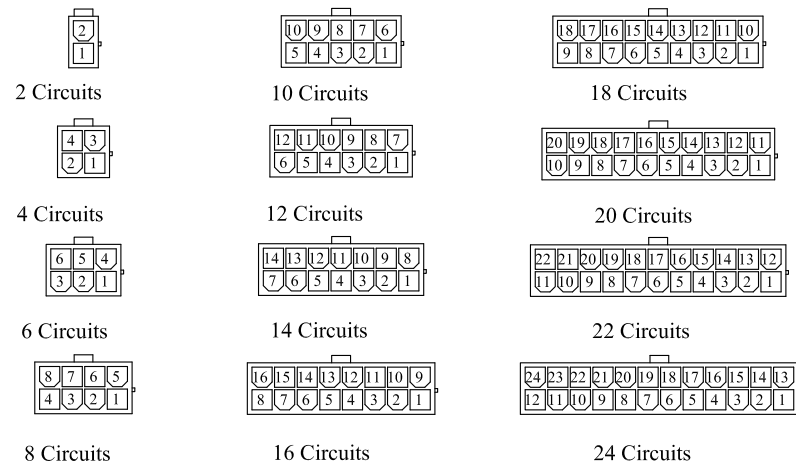
F= UL 94V-0 without screw hole and with mounting pegs, White

A=4.20mm(.165")*No. of Spaces

B=A+5.40mm(.213")



Detail Circuit Pattern Schedule:



TOLERANCE UNLESS OTHERWISE SPECIFIED			LEOCO CORPORATION http://www.leoco.com.tw		
mm			APPROVED BY:	DATE:	TITLE:
[inch]	mm	inch	Chard	2018.01.25	4.2mm Pitch Straight Type Power Connector
1 PLACE	± 0.30	± ---	CHECKED BY:	DATE:	
2 PLACES	± 0.20	± .012	Spring	2018.01.25	PART NO.: 6745P**V*0*
3 PLACES	± 0.10	± .008	DRAWN BY:	DATE:	
4 PLACES	± ---	± .004	Angel	2018.01.25	DRAWING NO.: 674523S
ANGULAR ±1°			SIZE: A3	SCALE: 1:1	REV.: A
					SHEET: 1 OF 1