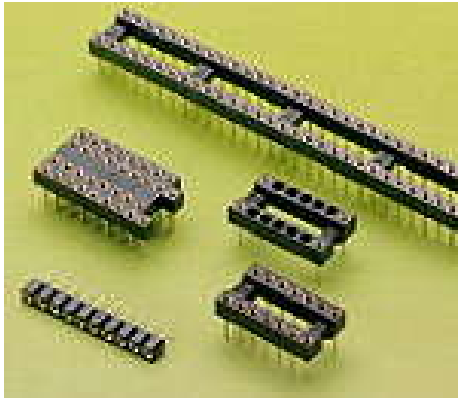
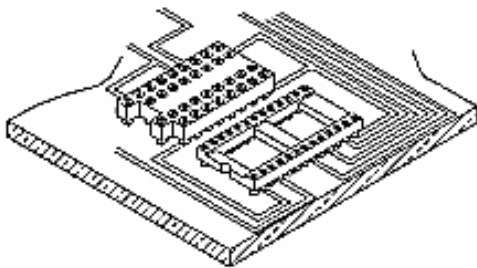


8320/8340 Series



Features

- ◆ Glass filled polyester UL94V-0
- ◆ Plating 8320: inner contact-10 μ " gold over nickel
Outer sleeve -Tin plated
- ◆ Plating 8340 :Tin plated :80 μ "nickel, 200 μ "Tin
Gold plated: 80 μ "nickel, full gold flash



Specifications

- ◆ Current rating: 2A AC,DC
- ◆ Voltage rating: 100V AC,DC
- ◆ Temperature rating: -25°C ~ +105°C
- ◆ Contact resistance:
Initial:20m Ω max.
After environmental test:40m Ω max.
- ◆ Insulation resistance:
Initial:1,000M Ω min.
After humidity and thermal shock test:500M Ω min
- ◆ Withstanding voltage: 1,000V AC /minute
- ◆ Applicable PC board thickness: 1.6mm

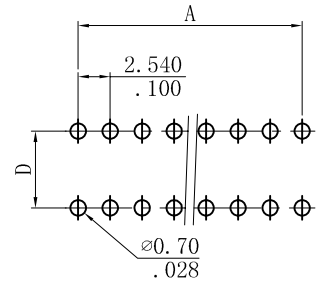
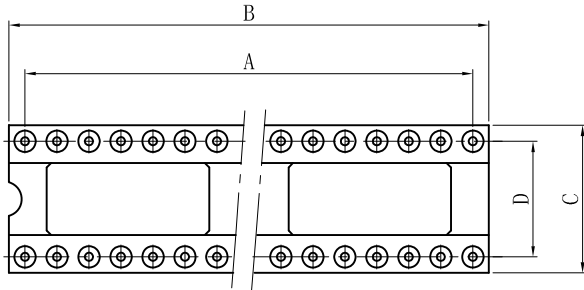
Ordering Information:

8320 ** X 000
1 2 3 4

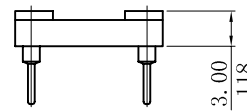
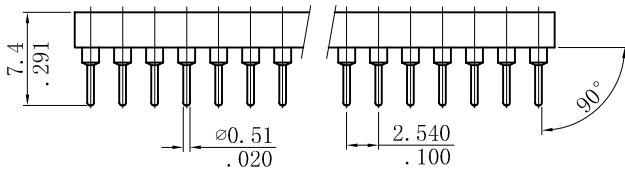
- 1、Series No
- 2、No. of circuits
- 3、Contact plating
X = 10u" gold over nickel
- 4、Special options

- A = 2.54mm(.100") * No. of Spaces
 B = A + 2.54mm(.100")
 C = 10.16mm(6~20 circuits)
 12.70mm(22 circuits)
 17.78mm(24~32 circuits)
 D = 7.62mm(6~20 circuits)
 10.16mm(22 circuits)
 15.24mm(24~32 circuits)

Unit: $\frac{\text{mm}}{\text{inch}}$



RECOMMENDED HOLE PATTERN



Ordering Information:

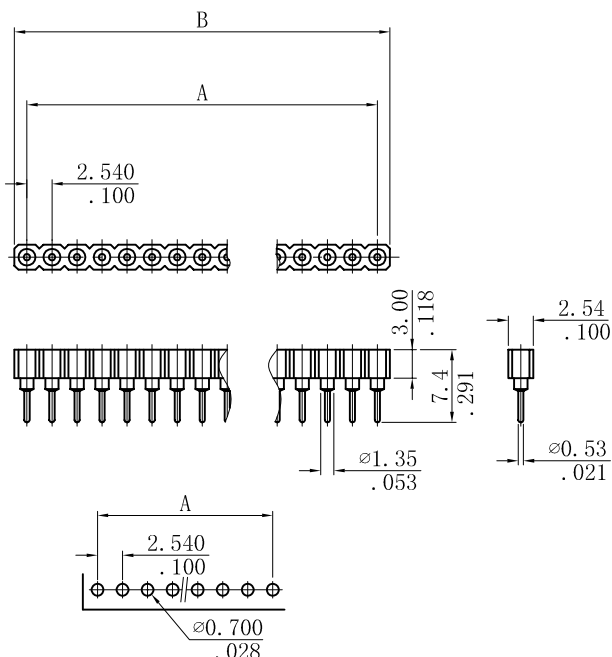
8340 - ** X 000
1 2

- 1、No. of circuits
- 2、Contact plating
X = 10u" gold over nickel
T = 100u" Tin over 80u" nickel

- A = 2.54mm(.100") * No. of Spaces
 B = A + 2.54mm(.100")

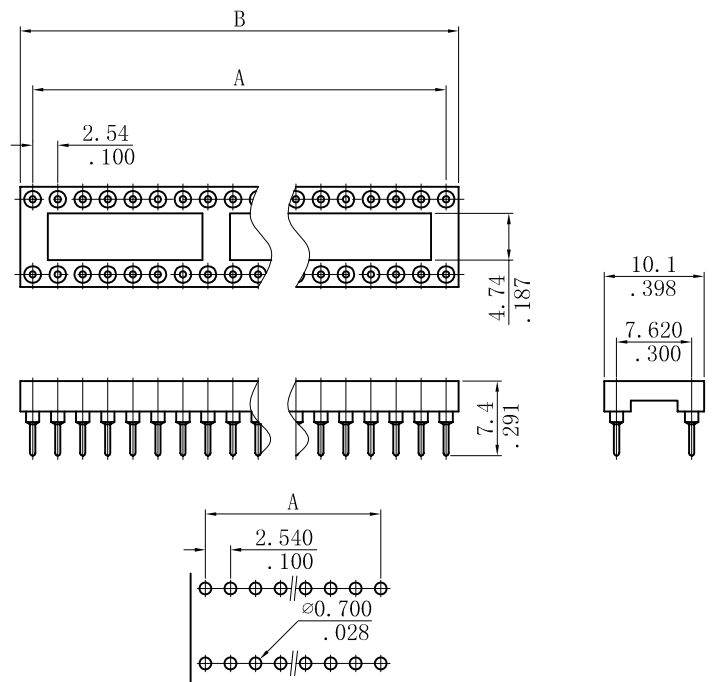
Unit: $\frac{\text{mm}}{\text{inch}}$

Single row type



RECOMMENDED HOLE PATTERN

Double row type



RECOMMENDED HOLE PATTERN