

NOTES:

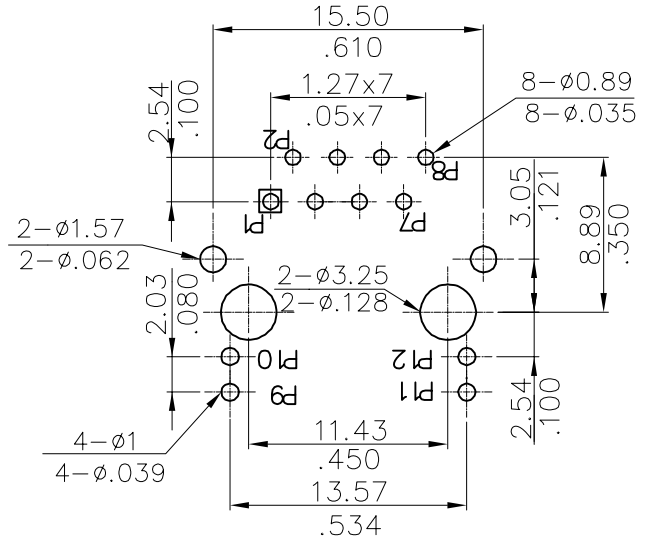
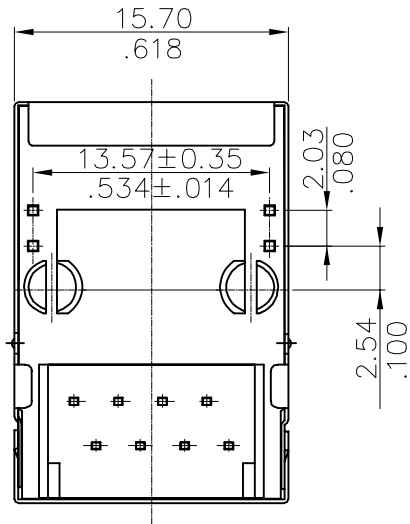
1. Connector Material:

Housing: Thermoplastic UL94V-0  
 Color: Black  
 Contact/Shield: Cooper Alloy

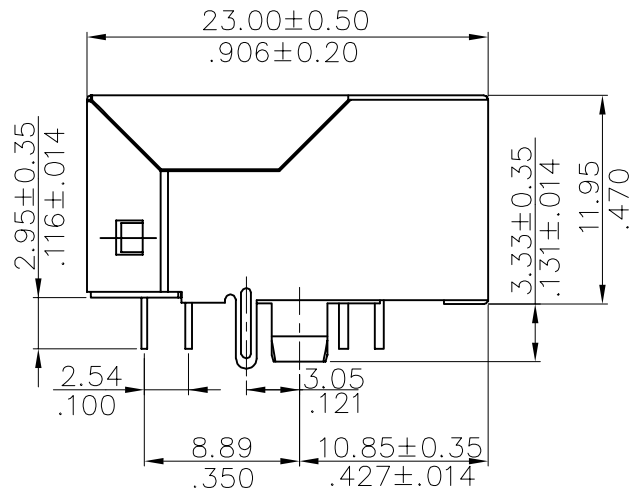
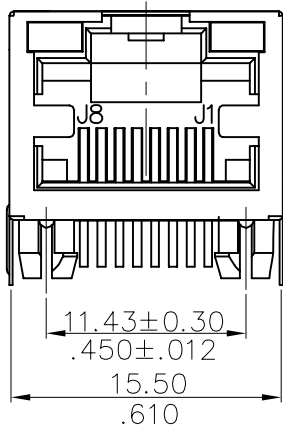
RoHS COMPLIANT

2. Plating:

Contact Plating: Selective Gold, In Contact Area  
 Shield Plating: Nickel or Tin Plated

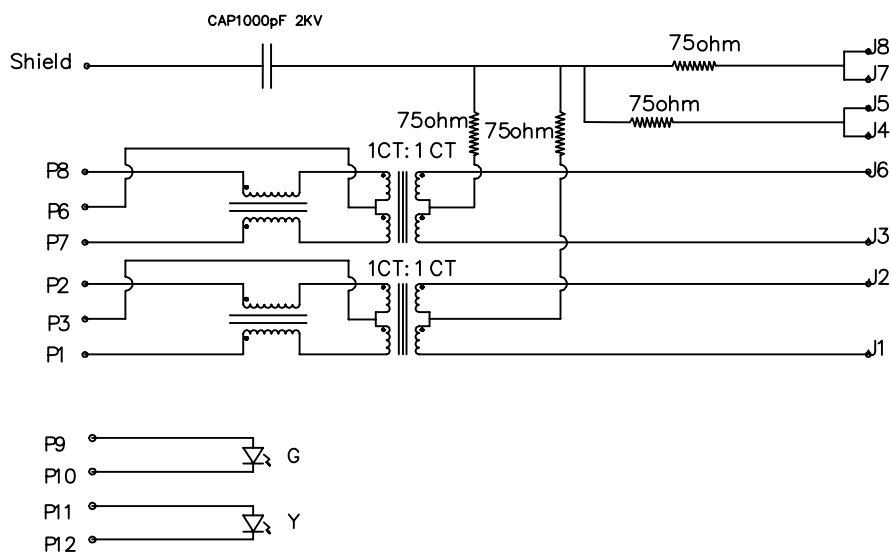


PCB RECOMMENDED HOLE LAYOUT SEEN FROM COMPONENT SIDE  
 ALL CENTER LINE DIMENSIONS ARE BASIC



				<b>leoco</b> LECO CORPORATION		APPROVED:		PART NO.: 7634-0808F0			
				GENERAL TOLERANCES: (UNLESS SPECIFIED)		DATE:		TITLE: JACK			
						CHECKED:		DRAWING NO.: 763401S			
						DATE:					
						DRAWN:					
						DATE:					
								UNITS		SCALE	
								4:1		A4 1/2 A	
REV.	ECO. NO.	CHG.	APP.	ANGULAR ± ( 1° )							

RoHS COMPLIANT



ELECTRICAL SPECIFICATIONS

- 1.0 TURN RATIO: (P1~P2) : (J1~J2) : 1: 1±3%  
(P7~P8) : (J3~J6) : 1: 1±3%
- 2.0 INDUCTANCE: (P1~P2) : 350uH MIN @ 0.1V,100KHZ,8mA DC BIAS  
(P7~P8) : 350uH MIN @ 0.1V,100KHZ,8mA DC BIAS
- 3.0 LEAKAGE INDUCTANCE: P1~P2(WITH J1 AND J2 SHORT) : 0.35uH MAX @ 1 MHZ  
P7~P8(WITH J3 AND J6 SHORT) : 0.35uH MAX @ 1 MHZ
- 4.0 INTERWINDING CAPACITANCE: (P1~P2):(J1~J2) : 35pF MAX @ 1MHZ  
(P7~P8):(J3~J6) : 35pF MAX @ 1MHZ
- 5.0 DC RESISTANCE: (P1~P2):(P7~P8) : 1.2 OHMS MAX
- 6.0 RETURN LOSS: 1MHZ TO 30MHZ : -18dB MIN  
30MHZ TO 80MHZ : -12dB MIN
- 7.0 DIELECTRIC WITHSTAND: (P1~P2):(J1~J2) : 1500V AC  
(P7~P8):(J3~J6) : 1500V AC
- 8.0 INSERTION LOSS : RS=RL=100OHM : -1.2dB MIN  
100KHZ TO 80MHZ
- 9.0 CROSS TALK: 1MHZ TO 100MHZ : 35dB TYP
- 10.0 COMMON TO COMMON MODE ATTENUATION : 30dB TYP

**leoco** LEOCO CORPORATION

GENERAL TOLERANCES:  
(UNLESS SPECIFIED)

	mm	inch
1 PLACE	± 0.30	± --
2 PLACES	± 0.20	± .012
3 PLACES	± 0.10	± .008
4 PLACES	± --	± .004

ANGULAR ± (1°)

APPROVED:

DATE:

CHECKED:

DATE:

DRAWN:

DATE:

PART NO.:

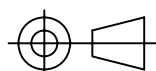
7634-0808F0

TITLE:

JACK

DRAWING NO.:

763401S



UNITS  
mm  
inch

SCALE  
4:1

SIZE  
A4

SHEET  
2/2

REV.  
A

REV. ECO. NO. CHG. APP.