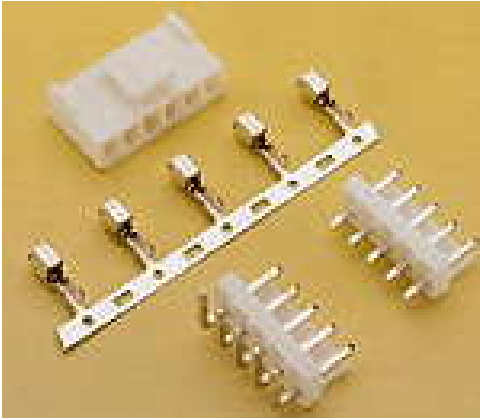


3950/3953T/3951 Series



Features

◆ 3950 Housing:

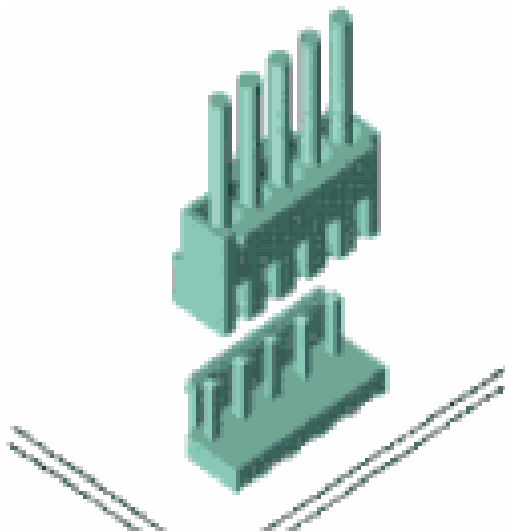
- Available in 2 through 12 circuits
- Polarized and with locking mechanism
- Nylon 6/6 UL94V-0
- Accepts Leoco 3953 crimp terminal
- Mates with 3951 friction lock header

◆ 3953 Terminal:

- Use in Leoco 3950 series socket
- Mates with 1.14mm(.045") square pin
- Material: Pre-tinned copper alloy or phosphor bronze

◆ 3951 Header:

- Available in 2 through 12 circuits
- Polarized and with locking ramp
- Nylon 6/6 UL94V-0
- 1.14mm(.045") square pin
- Mates with Leoco 3950 socket



Specifications

- ◆ Current rating: 5A AC,DC
- ◆ Voltage rating: 250V AC,DC
- ◆ Temperature rating: -40°C ~ +85°C
- ◆ Contact resistance:
 - Initial:20mΩ max.
 - After environmental test:40mΩ max.
- ◆ Insulation resistance:
 - Initial:1,000MΩ min.
 - After humidity and thermal shock test:500MΩ min.
- ◆ Withstanding voltage: 1,500V AC /minute
- ◆ Applicable wire: AWG 18 to 26
- ◆ Applicable PC board thickness: 1.6mm

Standards



Recognized No. E82349



Certified No. LR65731

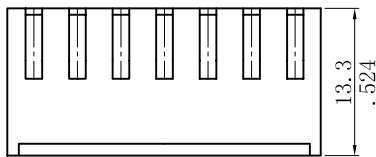
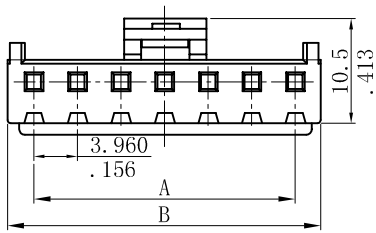


Licensed No. R50017097

Ordering Information:

3950S $\frac{**}{1}$ $\frac{000}{2}$ *

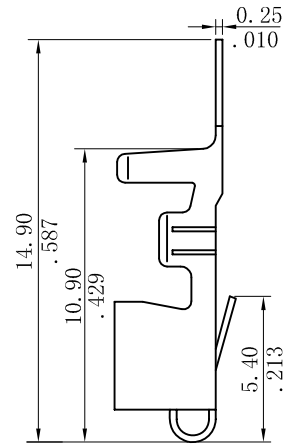
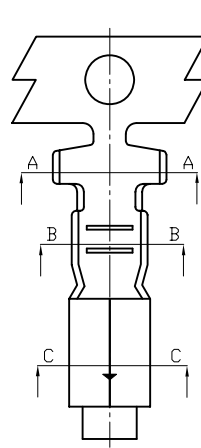
- 1.No. of Circuits
- 2.Housing color option



Ordering Information:

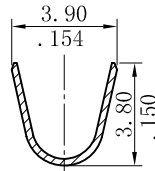
3953TPB00V2

- Wire Range: AWG 18~22
Reel Qty: 4,000pcs

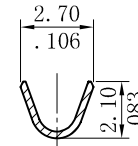


A = 3.96mm(.156") * No. of spaces

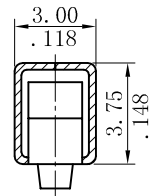
B = A + 4.72mm(.186")



Section A-A



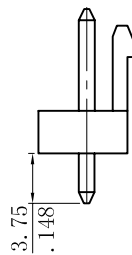
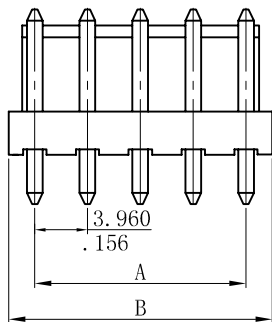
Section B-B



Section C-C

3951

Straight (V version)



Ordering Information:

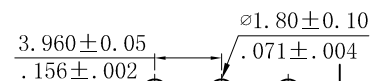
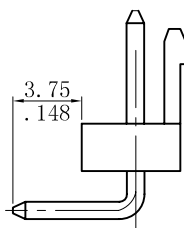
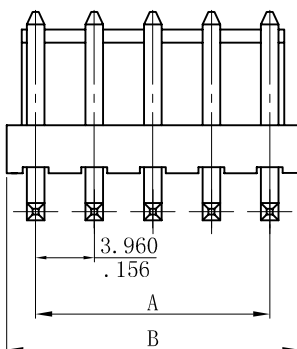
3951P $\frac{**}{1}$ $\frac{*}{2}$ 000

- 1.No. of Circuits
- 2.V : Straight Type
H : Right Angle Type

A = No. of spaces * 3.96mm(.156")

B = A + 3.94mm(.155")

Right Angle (H version)



RECOMMENDED HOLE PATTERN