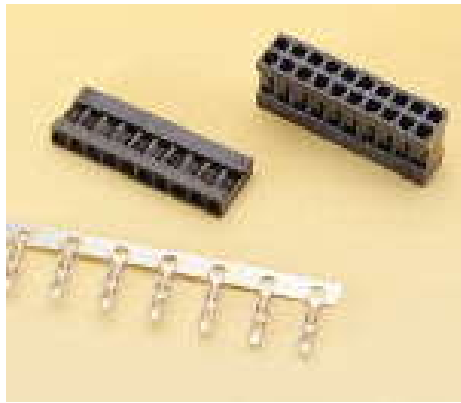


2065/2066/2065T Series



Features

◆ 2065 & 2066 Housing:

2065 Available in 2 through 30 circuits

2066 Available in 4 through 44 circuits

Material:PPO UL94V-1

Color: Black

Accepts Leoco 2065 crimp terminal

Mates with Leoco 2018 and 2028 header

◆ 2065 Terminal:

Dual contacts terminal

Accommodate wire range AWG 26 through 30

Use in Leoco 2065,2066 series socket

Material: Pre-tinned phosphor bronze

Specifications

◆ Current rating: 3A DC,AC

◆ Voltage rating: 250V DC,AC

◆ Temperature rating: -25°C ~ +105°C

◆ Contact resistance:

Initial: 20mΩ max.

After environmental test: 40mΩ max.

◆ Insulation resistance:

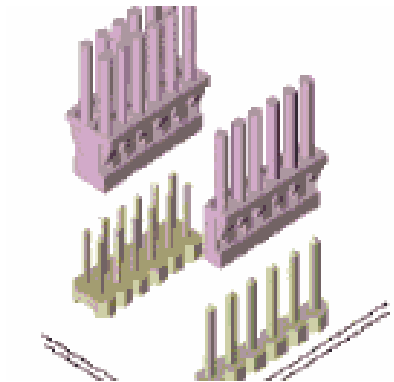
Initial: 1,000MΩ min.

After humidity and thermal shock test: 500MΩ min.

◆ Withstanding voltage: 500V AC /minute

◆ Applicable wire: AWG 26 to 30

◆ Applicable PC board thickness:1.6mm



Standards



Recognized No. E82349

2065/2066

Series 2.00mm(.079")Crimp Type Socket

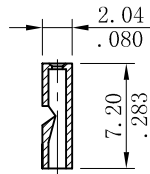
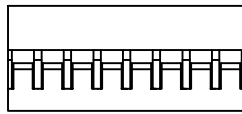
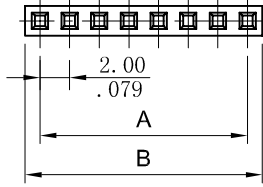


Unit: $\frac{\text{mm}}{\text{inch}}$

Ordering Information:

2065S $\frac{**}{1}$ 0000

1.No. of Circuits



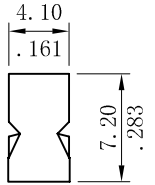
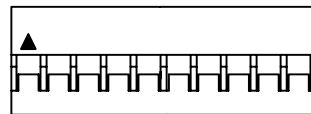
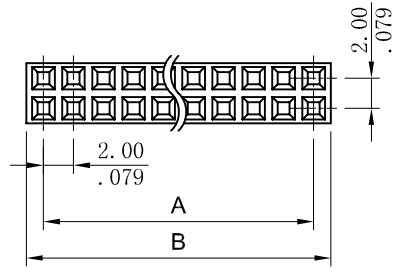
A=2.0mm(.079")*No. of spaces

B=A+2.26mm(.089")

Ordering Information:

2066S $\frac{**}{1}$ 0000

1.No. of Circuits



A=2.0mm(.079")*No. of spaces

B=A+2.30mm(.091")

2065

Series 2.00mm(.079")Crimp Terminal



Unit: $\frac{\text{mm}}{\text{inch}}$

Ordering Information:

Material: Phosphor Bronze

Wire Range: AWG 26 ~ 30

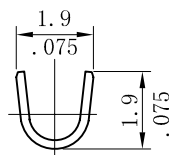
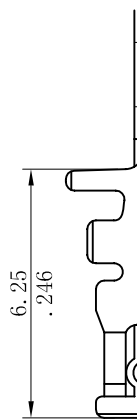
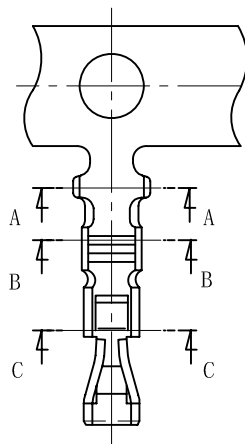
Reel Q`ty: 10,000pcs

2065TPBU00 $\frac{*}{1}$

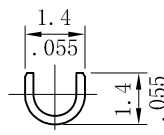
1.Circuits range

0=Used in between 10 circuits and 44 circuits

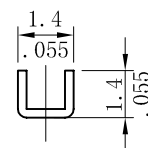
1=Used in between 2 circuits and 8 circuits



Section A-A



Section B-B



Section C-C