

1510/1510T/1511 Series

Features

◆ 1510 Housing:

Available in 2 through 13 circuits

Material: Nylon 66, UL94V-0

Accepts Leoco 1510 crimp terminal

Mates with Leoco 1511 header

◆ 1510 Terminal:

Material : Phosphor Bronze

Accommodate wire range AWG 28 through 32

Use in Leoco 1510 series socket

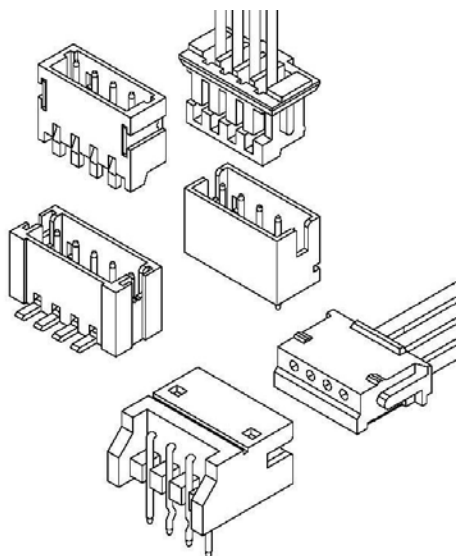
◆ 1511 Header

Material : Nylon 9T,UL94V-0

Contact : Brass/Tin-plated

0.50(.002") Square pin

Mates with Leoco 1510 header



Specifications

◆ Current rating: 1A DC,AC

◆ Voltage rating: 50V DC,AC

◆ Temperature rating: -25°C ~ +85°C

◆ Contact resistance: 20mΩ max.

◆ Insulation resistance: 500MΩ min.

◆ Withstanding voltage: 500V AC /minute

◆ Applicable wire: AWG 28 to 32

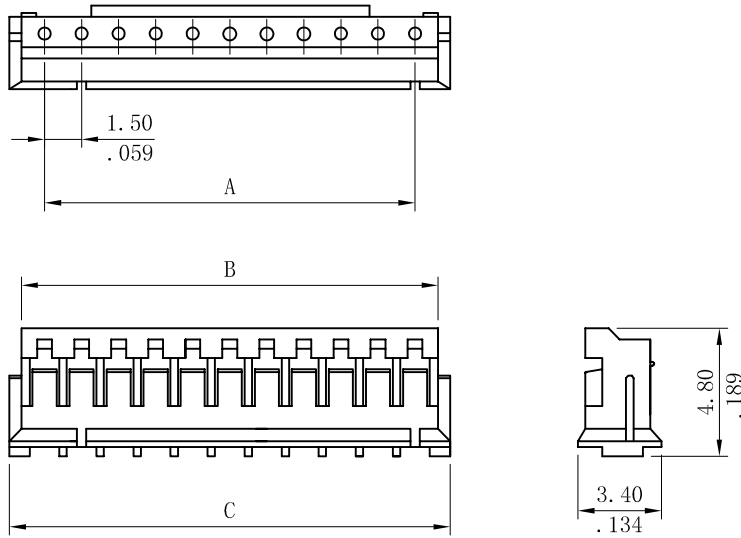
◆ Applicable PC board thickness: 0.6~1.2mm

Ordering Information:

Unit: $\frac{\text{mm}}{\text{inch}}$

1510S ** 0000
I

1.No. of Circuits



$A = 1.5\text{mm} (.059") \times \text{No. of spaces}$

$B = A + 1.8\text{mm} (.071")$

$C = A + 3.0\text{mm} (.118")$

Ordering Information:

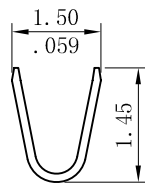
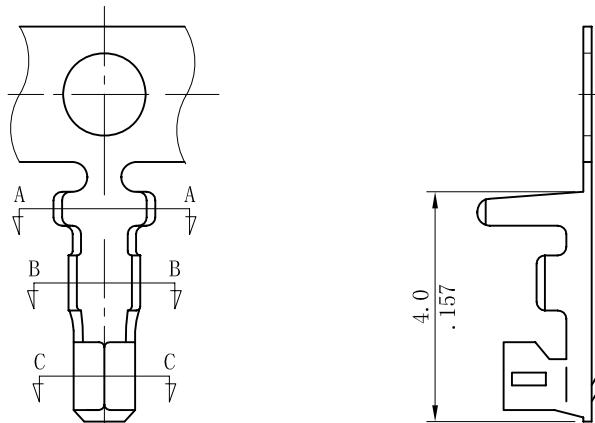
Unit: $\frac{\text{mm}}{\text{inch}}$

1510TPB0000

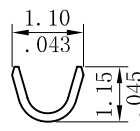
Material: Phosphor Bronze

Wire Range: AWG 28 ~ 32

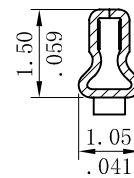
Reel Qty: 10,000pcs



SECTION A-A



SECTION B-B



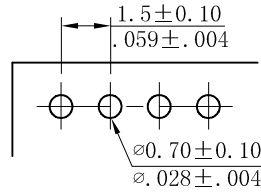
SECTION C-C

Ordering Information:

Unit: $\frac{\text{mm}}{\text{inch}}$

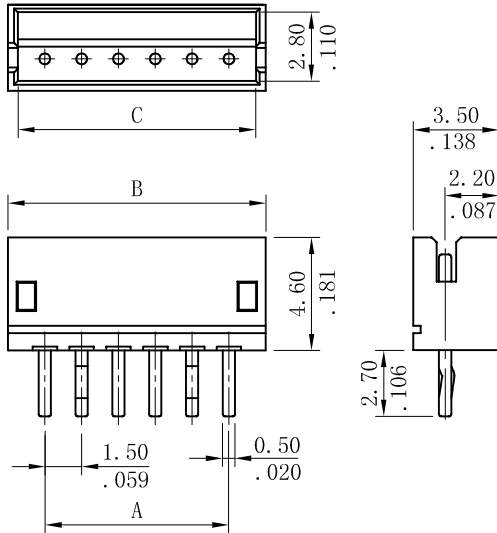
1511P $\frac{**}{1}$ $\frac{*}{2}$ 000

- 1.No. of Circuits
- 2.V=Straight Type
- H=Right Angle Type



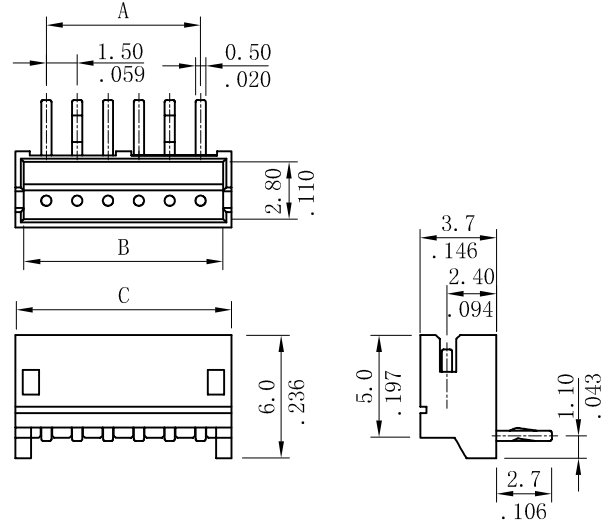
Recommended Hole Pattern

Straight (V version)



A=1.5mm (.059") *No. of spaces
 B=A+3.0mm (.118")
 C=A+2.0mm (.079")

Right Angle (H version)



A=1.5mm (.059") *No. of spaces
 B=A+2.2mm (.087")
 C=A+3.0mm (.118")

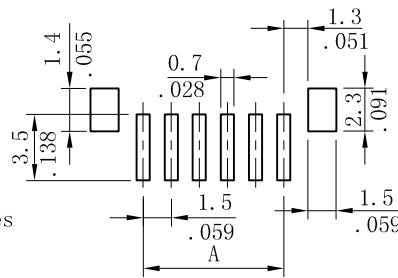
Ordering Information:

Unit: $\frac{\text{mm}}{\text{inch}}$

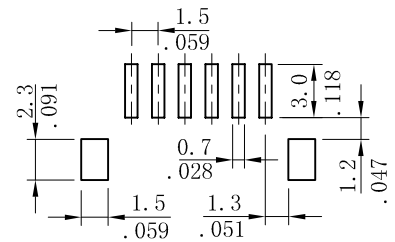
1511P $\frac{**}{1}$ $\frac{M}{2}$ $\frac{*}{3}$ 00

- 1.No. of Circuits
- 2.M:SMT Type
- 3.V=Straight Type
- H=Right Angle Type

A=1.5mm (.059") *No. of spaces
 B=A+4.5mm (.177")
 C=A+2.1mm (.083")

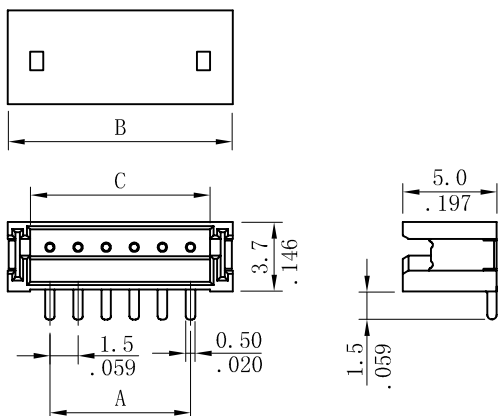


Recommended PCB Pattern



Recommended PCB Pattern

Straight (V version)



Right Angle (H version)

