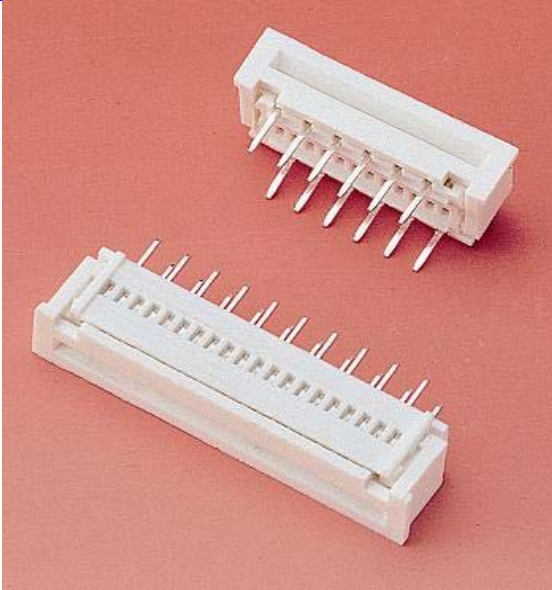
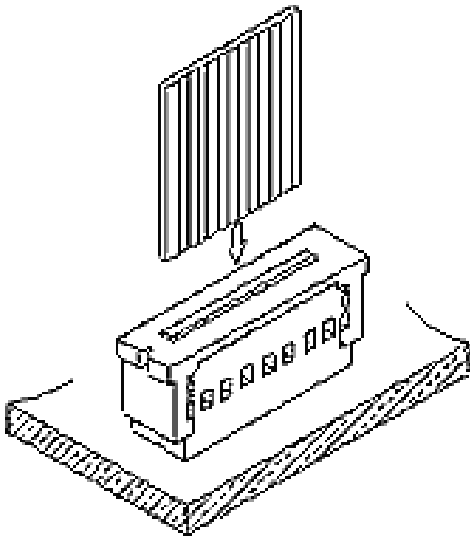


## 1255 Series



### Features

- ◆ Available for 4 through 32 circuits
- ◆ Plating: Tin plated
- ◆ Contact: Phosphor bronze
- ◆ FFC AWG 24 1.25mm pitch  
Thickness: 0.30 mm
- ◆ Applicable P.C. Board thickness: 1.6mm



### Specifications

- ◆ Current rating: 1.0A AC,DC
- ◆ Voltage rating: 30V AC,DC
- ◆ Temperature rating: -25°C to +85°C
- ◆ Contact Resistance: 20mΩ Max.
- ◆ Insulation Resistance: 500MΩ Min.
- ◆ Withstanding Voltage: 500V AC/minute

### Standards

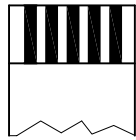
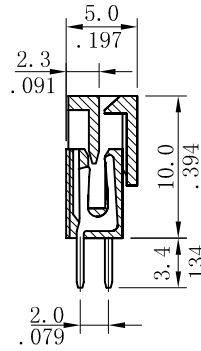
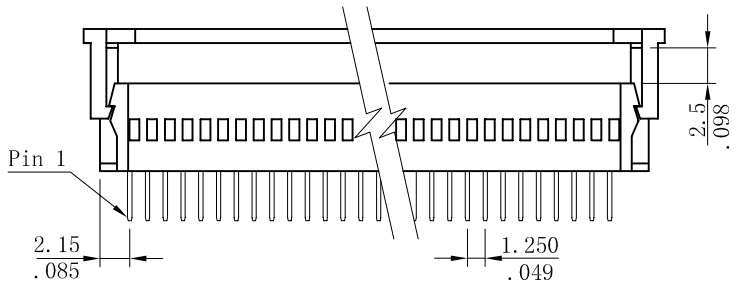
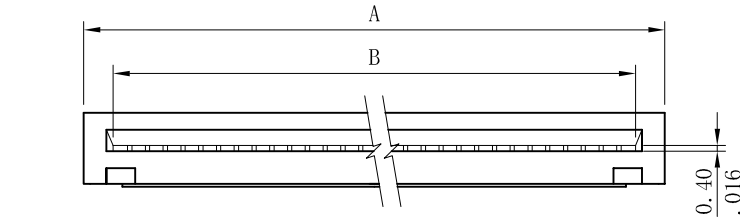
 Recognized No. E82349

1255S\*\*VT00

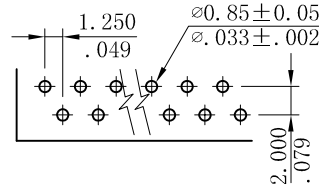
Ordering Information:

1255 S \*\* \* T 00  
 1 2 3 4 5

1. Series No.
2. S: Socket
3. No. of circuits
4. V=Straight type  
 H=Right angle type
5. Plating  
 T=Tin plated 100u" min.  
 over 30~50u" nickel overall

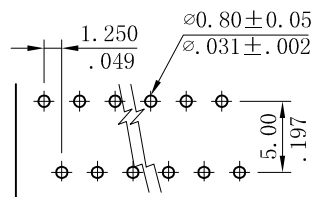
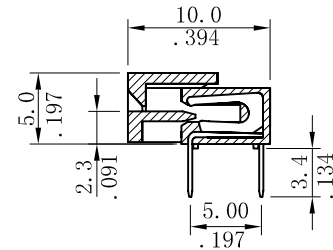
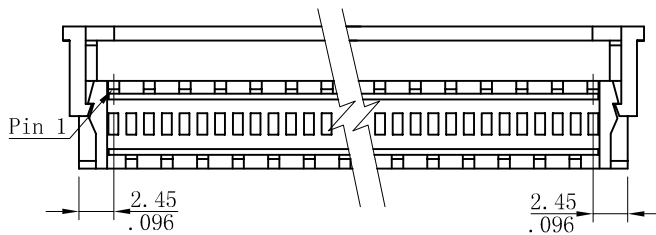
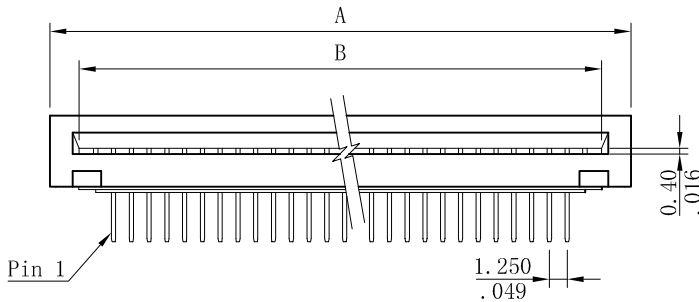


Recommended FFC/FPC Pattern  
 Thickness  $0.3 \pm 0.05\text{mm}$



Recommended Hole Pattern  
 ( Top View )

1255S\*\*HT00



Recommended Hole Pattern  
 ( Top View )

A=1.25mm(.049")\*No. of circuits+5.80mm(.228")

B=1.25mm(.049")\*No. of circuits+1.45mm(.057")