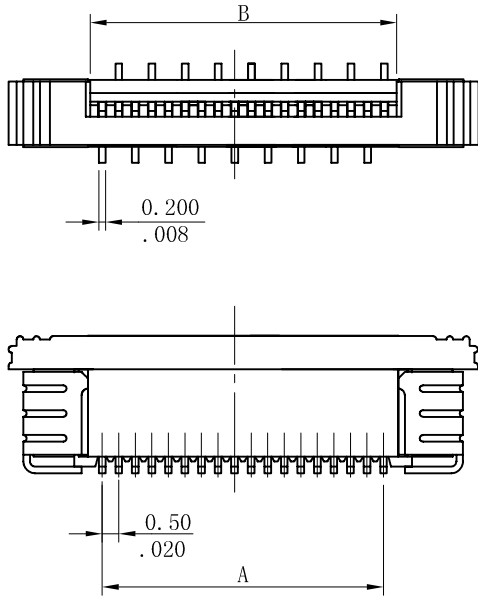
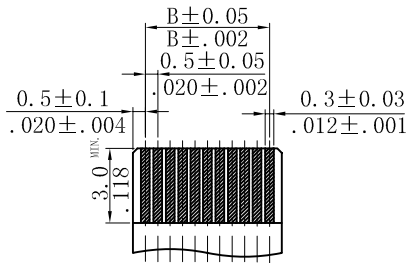


Unit: $\frac{\text{mm}}{\text{inch}}$



$A = 0.5\text{mm} (.020") \times \text{No. of spaces}$
 $B = A + 1.10\text{mm} (.043")$

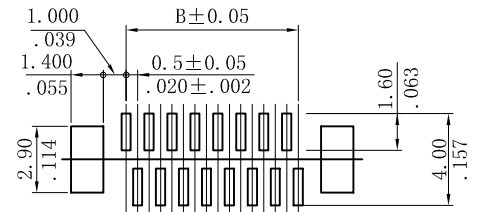


$T = 0.3 \pm 0.05 (.012" \pm .002")$
Recommended FFC/FPC Pattern

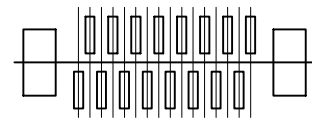
Ordering Information:

0500 S ** 0 M 0 *
 1 2 3 4

- Series name
- Number of circuits
- Terminal type
M=SMT terminal
- Terminal arrangement
0=Staggered tail (TYPE I)
1=Staggered tail (TYPE II)

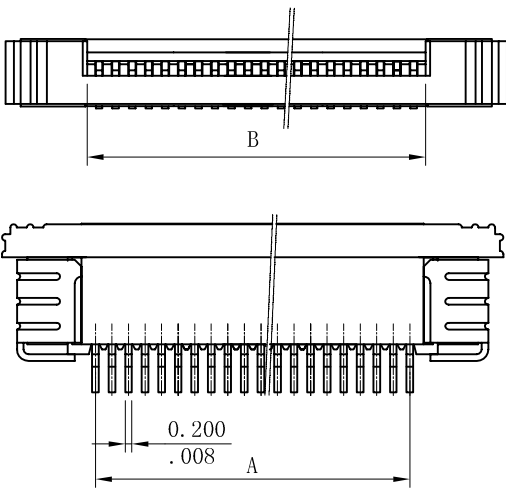


Recommended PCB Pattern
 TYPE I (Top of View)

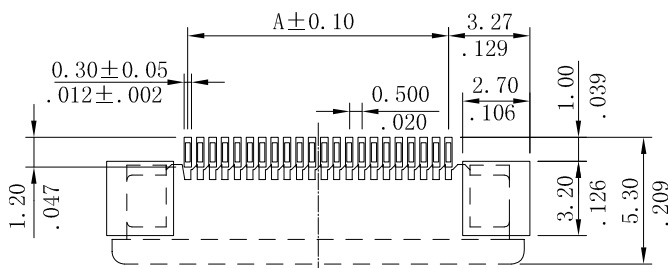
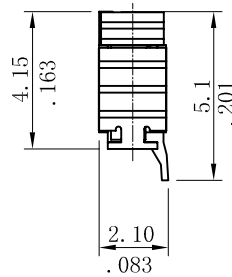


Recommended PCB Pattern
 TYPE II (Top of View)

Unit: $\frac{\text{mm}}{\text{inch}}$



$A = 0.5\text{mm} (.020") \times \text{No. of spaces}$
 $B = A + 1.10\text{mm} (.043")$

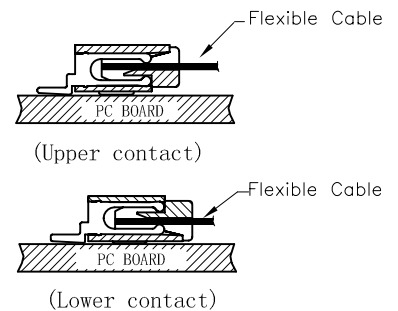


RECOMMENDED PCB PATTERN

Ordering Information:

0503 S ** U M 0 0
 1 2 3 4 5

- Series name
- Number of circuits
- Contact type
U = Upper contact
D = Lower contact
- Terminal type
M=SMT terminal
- Packing:
0 = Tube
1 = Tape & Reel



Ordering Information:

Unit: $\frac{\text{mm}}{\text{inch}}$

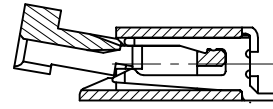
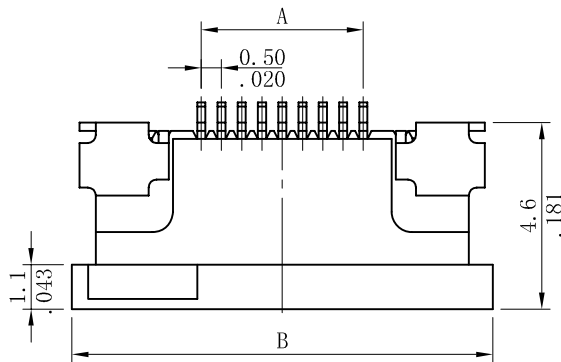
0514S	**	D	T	0	*
1	2	3	4	5	6

1. Series No.
2. No. of Circuits
3. Contact style: D= Downside contact
U= Upside contact
4. Plating code:
T= Tin Plated 120u" min.
over 30~50u" nickel overall
5. Color: 0= Nature
6. Other option: R= Tape & Reel
T= Tube Packing

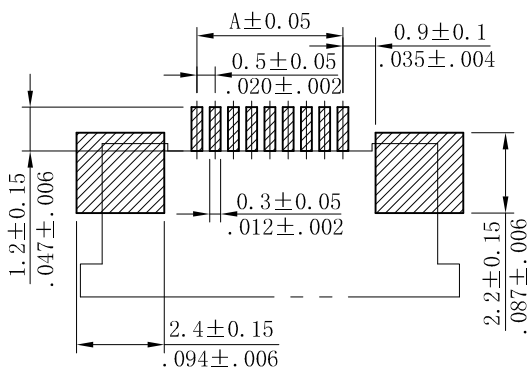
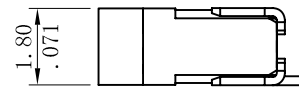
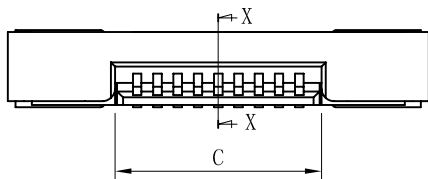
$A=0.5\text{mm}(.020")*\text{No. of spaces}$

$B=A+6.4\text{mm}(.252")$

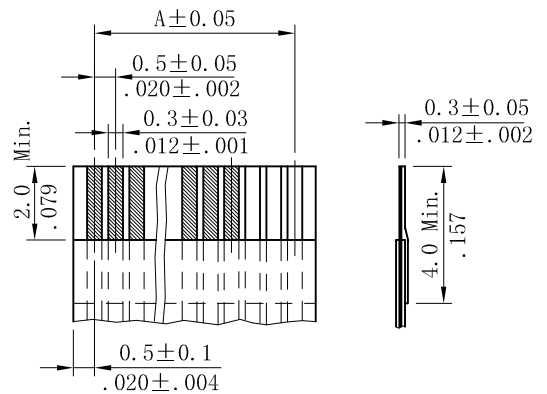
$C=A+1.1\text{mm}(.043")$



SECTION X-X



RECOMMENDED PCB PATTERN



RECOMMENDED FFC/FPC PATTERN